

CFS
DIGITAL
EDITION

CAUTION: THE INFORMATION
IN THIS PUBLICATION MAY
BE SUPERSEDED BY NOTAM
OR AIP SUPPLEMENT

EFFECTIVE 0901Z **27 JANUARY 2022**
TO 0901Z 24 MARCH 2022

CANADA FLIGHT SUPPLEMENT

DIGITAL EDITION

**YUKON
NORTHWEST TERRITORIES
NUNAVUT**

TERMINAL AND ENROUTE DATA

AIP Canada (ICAO) Part 3 - Aerodromes (AD)
Department of National Defence Flip GPH 205

Serving a world in motion
navcanada.ca

NAV
CANADA



CFS
DIGITAL
EDITION

CAUTION: THE INFORMATION
IN THIS PUBLICATION MAY
BE SUPERSEDED BY NOTAM
OR AIP SUPPLEMENT

EFFECTIVE 0901Z **27 JANUARY 2022**
TO 0901Z 24 MARCH 2022

CANADA FLIGHT SUPPLEMENT

DIGITAL EDITION

NORTHWEST TERRITORIES TERMINAL AND ENROUTE DATA

AIP Canada (ICAO) Part 3 - Aerodromes (AD)
Department of National Defence Flip GPH 205

Serving a world in motion
navcanada.ca



Published by NAV CANADA in accordance with ICAO Annexes 4 and 15
of the Convention on International Civil Aviation

Cartography and Printing: NAV CANADA

Source of Canadian Civil Aeronautical Data: © 2022 NAV CANADA All rights reserved

Source of Canadian Military Aeronautical Data:
Her Majesty the Queen in Right of Canada Department of National Defence

NORTHWEST TERRITORIES

AERODROME / FACILITY DIRECTORY

AKLAVIK / FREDDIE CARMICHAEL NT

CYKD

REF	N68 13 24 W135 00 20 Adj 22°E (2017) UTC-7(6) Elev 21' A5034 A5040 LO5 CAP	
OPR	Govt of Northwest Territories 867-777-2467 Emerg/Incident rpt ctc 877-989-1400 1550-1655Z± 2350-0055Z± Mon-Fri, 1750-1855Z± 2250-2355Z± Sat, exc hols, Apr 30-Dec 15, O/T 1 hr PN, ctc 867-978-2792/2793 or 867-678-0388. Call out chg may be levied. Cert	
PF	A-1 C-2,3,4	
FLT PLN		
FIC	Edmonton 866-WXBRIEF (Toll free within Canada) or 866-541-4102 (Toll free within Canada & USA)	
ACC	Edmonton IFR 888-358-7526	
CARS	867-978-2309 Ltd hrs (see COMM)	
WX	METAR dur CARS hrs (see COMM). O/T LWIS	
RWY DATA	Rwy 13(134°)/31(314°) 3002x75 gravel	
RWY CERT	Rwy 13/31 AGN I	
RCR	Opr Win maint avbl 15-24Z± Mon-Fri exc hols, O/T 1 hr PN, ctc 867-978-2792/2793 or 867-678-0388. Call out chg may be levied. Rwy compacted snow & gravel mix during winter conditions.	
LIGHTING	13-AS(TE ME) AP, 31-AS(TE ME) AP ARCAL-122.1 type K, AS lgt avbl on hi intensity only.	
COMM		
MF	aprt rdo ltd hrs O/T tfc 122.1 5NM 3100 ASL (CAR 602.98)	
APRT RDO	122.1 (V) 14-24Z± Mon-Sat, 15-20Z± Sun, exc federal observed hols	

NORTHWEST TERRITORIES

AERODROME / FACILITY DIRECTORY

COLVILLE LAKE / TOMMY KOCHON NT

CYVL

REF	N67 01 16 W126 07 43 21°E (2021) UTC-7(6) Elev 899' A5034 A5035 LO5 CAP	
OPR	Govt of Northwest Territories 867-587-2451 Emerg/Incident rpt 877-989-1400 1530-1630Z† & 1900-2030Z† Mon, Wed & Fri, 1530-1730Z† & 2230-2400Z† Tue & Thu, exc hols, O/T 2 hr PN ctc 867-446-3070/0070. Call out chg may be levied. Cert	
PF	C-1,5	
FLT PLN		
FIC	Edmonton 866-WXBRIEF (Toll free within Canada) or 866-541-4102 (Toll free within Canada & USA)	
WX	METAR AUTO WxCam	
RWY DATA	Rwy 17(173°T)/35(353°T) 3935x98 GRVL	
RWY CERT	Rwy 17/35 AGN II	
RCR	Opr Win maint 1530-0030Z† Mon-Fri exc hols Oct 1-Apr 30, O/T 2 hrs PN 867-446-3070/0070. Call out chg may be levied. Rwy compacted snow & grvl mix during win conds.	
LIGHTING	17-AS(TE ME) AP, 35-AS(TE ME) AP ARCAL-123.2 type J	
COMM		
ATF	tfc 123.2 5NM 3900 ASL	
AWOS	128.6	
CAUTION	Extv migratory bird activity in vic A/D Apr-Oct.	

NORTHWEST TERRITORIES

AERODROME / FACILITY DIRECTORY

DÉLINE NT

CYWJ

REF	N65 12 40 W123 26 11 1.4NW 21°E (2017) UTC-7(6) Elev 702' A5035 LO5 CAP	
OPR	Govt of Northwest Territories 867-587-2451 Emerg/Incident rpt 877-989-1400 1530-1730Z†, 2315-0030Z† Mon, Tue, Thu & Fri, 1530-1730Z†, 2230-0030Z† Wed, exc hols, O/T 2 hr PN ctc 867-589-3411 or 867-621-7286. Call out chg may be levied. Cert	
PF	C-1,2,4,5	
FLT PLN		
FIG	Edmonton 866-WXBRIEF (Toll free within Canada) or 866-541-4102 (Toll free within Canada & USA)	
CARS	867-589-3033 Ltd hrs (see COMM)	
WX	METAR dur CARS hrs (see COMM) O/T LWIS TAF 15-00Z†, Mon-Sat, issue times: 1510, 1740Z (DT 1410, 1740Z). Exc federal observed hols.	
SERVICES		
FUEL	JA-1 Mon-Fri 1500-0030Z† 867-589-3361 O/T call out charge. 867-589-3162/3514	
RWY DATA	Rwy 08(080°)/26(260°) 3933x99 GRVL Rwy 08 down 0.49%	
RWY CERT	Rwy 08/26 AGN II	
RCR	Opr Win maint 1530-0030Z† Mon-Fri exc hols Oct 1-Apr 30, O/T 2 hrs PN ctc 867-589-3411 or 867-621-7286. Call out chg may be levied. Rwy compacted snow & grvl mix during win conds.	
LIGHTING	08-AS(TE ME) AP, 26-AS(TE ME) AP ARCAL-122.1 type K Key mic 7 times for AS. APAPI avbl only dur CARS hrs ops.	
COMM		
MF	aprt rdo ltd hrs O/T tfc 122.1 5NM 3700 ASL (CAR 602.98)	
APRT RDO	122.1 (V) 14-00Z† Mon-Sat, 18-23Z† Sun, exc federal observed hols	
CAUTION	Caribou may be on or in vic rwy. Extv migratory bird activity Apr-Oct.	

NORTHWEST TERRITORIES

AERODROME / FACILITY DIRECTORY

DIAVIK NT

CDK2

REF	N64 30 41 W110 17 23 13°E (2020) UTC-7(6) Elev 1416' A5036 LO5 HI2 CAP	<p>The map shows the aerodrome layout with runway 10/28 oriented north-south. The runway length is 5234 feet. A blasting area is located to the north of the runway. A stockpile is located south of the runway. A 5 NM radius circle is centered on the aerodrome, with an elevation of 2800 ASL. The aerodrome elevation is 1416 ASL. Lac de Gras is to the northeast. A stockpile is marked at 1637 ASL. A wind turbine group is located 1.8 NM southwest of the aerodrome.</p>
OPR	Diavik Diamond Mines (2012) Inc 867-669-6500 Ext 5544/5936/5935 Reg PPR	
FLT PLN		
FIC	Edmonton 866-WXBRIEF (Toll free within Canada) or 866-541-4102 (Toll free within Canada & USA)	
ACC WX	Edmonton IFR 888-358-7526 AUTO	
RWY DATA	Rwy 10(099°T)/28(279°T) 5234x167 gravel	
RCR	Opr	
LIGHTING	10-AN (TE HI) P3, 28-AN (non-std 1500') (TE HI) P3	
COMM		
ATF	UNICOM (AU) ltd hrs O/T tfc 122.7 25NM centred on Ekati A/D 14.1NM NW 5000 ASL	
CAUTION	High density tfc - see EKATI-DIAVIK VTPC. Caribou may be on or in vic rwy. Blasting area 0.5NM SSE A/D sfc to 2500 ASL and 14NM NW A/D (EKATI) sfc to 2600 ASL. Blasting and all clear announcements on DIAVIK unicom 122.7. Stockpile S of rwy to 1637 ASL. Wind turbine group 1.8NM SW A/D, max alt 1795 ASL	

NORTHWEST TERRITORIES

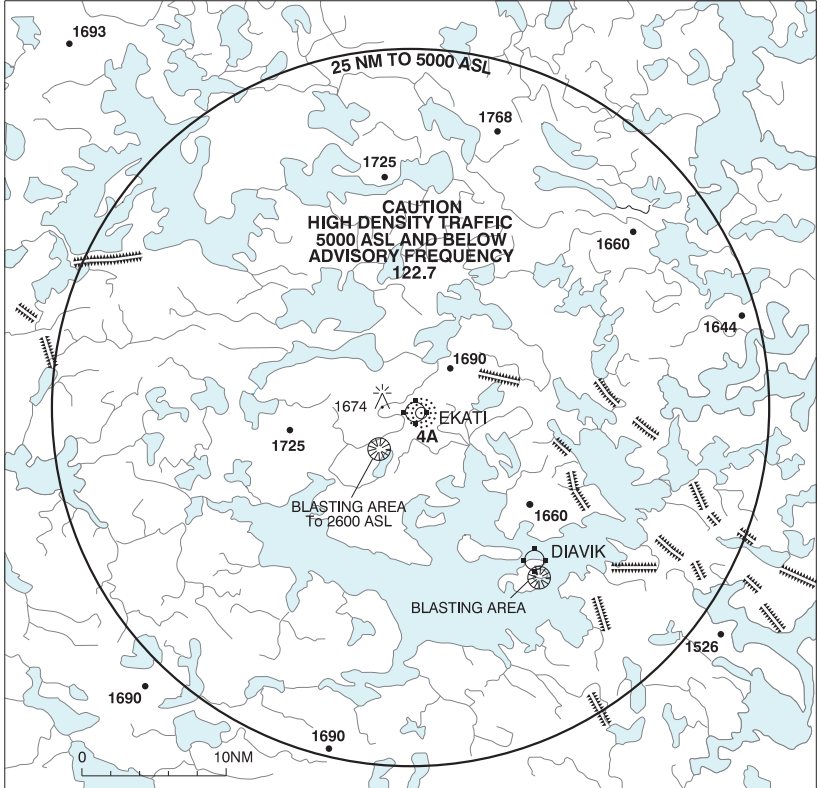
AERODROME / FACILITY DIRECTORY

EKATI NT

CYOA

REF	N64 41 56 W110 36 53 13°E (2020) UTC-7(6) Elev 1536' A5036 LO5 HI2 CAP	
OPR	Arctic Canadian Diamond Company Ltd. 867-880-2220 Reg PPR	
FLT PLN	FIG Edmonton 866-WXBRIEF (Toll free within Canada) or 866-541-4102 (Toll free within Canada & USA) ACC Edmonton IFR 888-358-7526 WX METAR 12-24Z± METAR AUTO H24 (see COMM) TAF issue times: 14, 19Z (DT 13, 19Z)	
RWY DATA	Rwy 02(023°T)/20(203°T) 6411x148 GRVL Rwy 20 up 0.45% RCR Opr	
HELI DATA	Parking pad 1,2 & 3: 52' dia GRVL	
LIGHTING	02-AN(TE HI) P2, 20-AN(TE HI) P2 (non-std)	
COMM	RCO Edmonton rdo 123.275 (FISE) 126.7 (bcst) ATF UNICOM (AU) ltd hrs O/T tfc 122.7 25NM 5000 ASL PAL Edmonton Ctr 135.175 AUTO 122.175	
NAV	NDB KOALA 4A 350 (M) N64 41 53 W110 36 33 Pvt	
CAUTION	High density tfc - see EKATI-DIAVIK VTPC. Caribou may be on or in vic rwy. Blasting area 2.4NM SSW of A/D, sfc to 2600 ASL. Blasting and all clear announcements on EKATI unicom 122.7. Remotely Piloted Aircraft (RPA) act in vic of AD. Migratory bird act May-Oct.	

EKATI-DIAVIK VFR TERMINAL PROCEDURES CHART



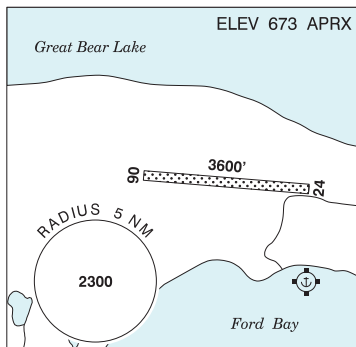
NORTHWEST TERRITORIES

AERODROME / FACILITY DIRECTORY

FORD BAY NT

CBC2

REF	N66 02 15 W124 42 54 23°E (2014) UTC-7 Elev 673' aprx A5035
OPR	Trophy Lodge 204-774-5775 Reg PPR
FLT PLN	
FIC	Edmonton 866-WXBRIEF (Toll free within Canada) or 866-541-4102 (Toll free within Canada & USA)
ACC	Edmonton IFR 888-358-7526
RWY DATA	Rwy 06/24 3600x100 sand
RCR	Opr No win maint. Rwy soft after rain.
COMM	
ATF	UNICOM ltd hrs O/T tfc 122.8 5NM 3700 ASL



NORTHWEST TERRITORIES

AERODROME/FACILITY DIRECTORY

FORT GOOD HOPE NT

CYGH

REF	N66 14 26 W128 38 51 1SW 22°E (2017) UTC-7(6) Elev 267' A5034 LO5 HI2 CAP	
OPR	Govt of Northwest Territories 867-587-2451 Emerg/Incident rpt ctc 877-989-1400 1530-1915Z±, 2300-0030Z± Mon & Fri, 1530-1700Z±, 2300-0030Z± Tue & Thu, 1530-1915Z±, 2330-0030Z± Wed, exc hols, O/T 2 hr PN ctc 867-446-4785 or 403-801-6093. Call out chg may be levied. Cert	
PF	C-1,2,4,5	
FLT PLN		
FIC	Edmonton 866-WXBRIEF (Toll free) within Canada) or 866-541-4102 (Toll free within Canada & USA	
ACC	Edmonton IFR 888-358-7526	
CARS	867-598-2241 Ltd hrs (see COMM)	
WX	METAR dur CARS hrs (see COMM) O/T LWIS TAF 15-24Z± Mon-Sat, issue times: 1510, 1740Z (DT 1410, 1740Z). Exc federal observed hols.	
RWY DATA	Rwy 07(070°)/25(250°) 4434x99 GRVL Rwy 07 up 0.73% first 2853' then down 0.99%	
RWY CERT	Rwy 07/25 AGN II	
RCR	Opr Win maint 1530-0030Z± Mon-Fri exc hols Oct 1-Apr 30, O/T 2 hr PN ctc 867-446-4785 or 403-801-6093. Call out chg may be levied. Rwy compacted snow & grvl mix during win conds.	
LIGHTING	07-AS(TE ME)AP, 25-AS(TE ME)AP ARCAL-122.1 type K key mic 7 times for AS APAPI avbl only dur CARS hrs ops.	
COMM		
RCO	Edmonton rdo 123.55 (FISE) 126.7 (bcst)	
MF	aprt rdo ltd hrs O/T tfc 122.1 5NM 3300 ASL (CAR 602.98)	
APRT RDO	122.1 (V) 14-24Z± Mon-Sat, 14-19Z± Sun, exc federal observed hols	
NAV		
DME	YGH 112.3 Ch 70 N66 14 11 W128 37 23 (274')	
PRO	Airport Restriction: Sked pax svc rstd to acft with max wingspan less than 79' and max outer main gear wheel span less than 20'.	
CAUTION	Wildlife may be on or in vic rwy. Extv migratory bird activity Apr-Oct.	

NORTHWEST TERRITORIES

AERODROME / FACILITY DIRECTORY

FORT LIARD NT

CYJF

REF	N60 14 08 W123 28 12 Adj 18°E (2020) UTC-7(6) Elev 708' A5022 A5029 LO5 CAP	
OPR	Govt of Northwest Territories 867-695-2471 Emerg/Incident rpt 877-989-1400 Reg	
PF	B-1 C-2,4,5	
FLT PLN		
FIC	Edmonton 866-WXBRIEF (Toll free within Canada) or 866-541-4102 (Toll free within Canada & USA)	
ACC	Edmonton IFR 888-358-7526	
CARS WX	867-770-3171 Ltd hrs (see COMM) METAR dur CARS hrs (see COMM) O/T LWIS WxCam	
RWY DATA	Rwy 03(030°)/21(210°) 2946x98 GRVL Opr Win maint 1600-2330Z† Mon-Fri exc hols O/T 2 hr PN, ctc 250-321-0337. Call out chg may be levied. Rwy compacted snow & grvl mix during win conds.	
RCR		
LIGHTING	03-AS(TE LO) AP 3.3°, 21-AS(TE LO) AP 3.3° ARCAL-122.1 type J. Ngt ops not recommended unless hazard bcn oprg.	
COMM		
MF APRT RDO	aprt rdo ltd hrs O/T tfc 122.1 5NM 3800 ASL (CAR 602.98) 122.1 (V) 15-23Z† Mon-Fri exc federal observed hols	
PRO	Rgt hand circuits Rwy 21 (CAR 602.96).	
CAUTION	Marked P-line 196 AGL crossing Petitot River aprx 900' SE Thld Rwy 03. Wildlife in vic of rwy.	

NORTHWEST TERRITORIES

AERODROME / FACILITY DIRECTORY

FORT McPHERSON NT

CZFM

REF	N67 24 25 W134 51 35 2S 22°E (2017) UTC-7(6) Elev 115' A5034 LO5 CAP	
OPR	Govt of Northwest Territories 867-777-2467 Emerg/Incident rpt ctc 877-989-1400 1600-1715Z† Mon, Wed, Thu & Fri, 2200-2315Z† Mon-Fri exc hols, May & Nov O/T 1 hr PN, ctc 867-952-2901. Call out chg may be levied. Cert	
PF	C-1,2,3,4,5	
FLT PLN	<p>FIC Edmonton 866-WXBRIEF (Toll free within Canada) or 866-541-4102 (Toll free within Canada & USA)</p> <p>ACC Edmonton IFR 888-358-7526</p> <p>CARS 867-952-2121 Ltd hrs (see COMM)</p> <p>WX METAR dur CARS hrs (see COMM) O/T LWIS TAF 1530-2400Z† Mon-Sat, issue times: 16, 19Z (DT 15, 19Z) TAF 1630-2000Z† Sun, issue times: 17Z†</p>	
RWY DATA	Rwy 12(122°)/30(302°) 3934x100 GRVL	
RWY CERT	Rwy 12/30 AGN II	
RCR	Opr Win maint 15-24Z† Mon-Fri exc hols O/T 1 hr PN ctc 867-952-2901. Call out chg may be levied. Rwy compacted snow & gravel mix during win conds.	
LIGHTING	12-AS(TE ME) AP, 30-AS(TE ME) AP ARCAL-122.1 type K	
COMM	<p>MF aprt rdo ltd hrs O/T tfc 122.1 5NM 3100 ASL (CAR 602.98)</p> <p>APRT RDO 122.1 (V) 14-24Z† Mon-Sat, 15-20Z† Sun, exc federal observed hols</p>	

NORTHWEST TERRITORIES

AERODROME / FACILITY DIRECTORY

FORT PROVIDENCE NT

CYJP

REF	N61 19 09 W117 36 22 3E 18°E (2021) UTC-7(6) Elev 525' A5029 LO5 CAP	
OPR	Govt of Northwest Territories 867-874-2353 or 867-875-7316 Emerg/Incident rpt 877-989-1400 Reg	
PF	C-1,2,3,4,5	
FLT PLN		
FIC	Edmonton 866-WXBRIEF (Toll free within Canada) or 866-541-4102 (Toll free within Canada & USA)	
ACC	Edmonton IFR 888-358-7526	
RWY DATA	Rwy 14(136°)/32(316°) 2999x100 GRVL	
RCR	Opr Win maint 15-16Z± Mon, Wed, Fri exc statutory hols, O/T 1 hr PN ctc 867-699-3230/3533. Supervisor 867-444-4391. Call out chg may be levied. Rwy compacted snow & grvl mix during win conds.	
HELI DATA	Pad 1: FATO 98' dia GRASS TLOF 30' dia CONC Safety Area 146' dia Day use only Pad 2: FATO 85' dia GRVL TLOF 30' dia CONC Safety Area 133' dia Day use only	
LIGHTING	14-(TE LO), 32-(TE LO) ARCAL-123.2 type J	
COMM		
ATF	tfc 123.2 5NM 3500 ASL	
CAUTION	Buffalo may be on or in vic rwy.	

NORTHWEST TERRITORIES

AERODROME / FACILITY DIRECTORY

FORT RESOLUTION NT

CYFR

REF	N61 10 51 W113 41 23 17°E (2014) UTC-7(6) Elev 527' A5030 LO5 CAP	
OPR	Govt of Northwest Territories 867-872-2007/0207 Emerg/Incident rpt ctc 877-989-1400 Reg	
PF	C-1,2,3,4,5	
FLT PLN		
FIC ACC CARS WX	Edmonton 866-WXBRIEF (Toll free within Canada) or 866-541-4102 (Toll free within Canada & USA) Edmonton IFR 888-358-7526 867-394-4131 Ltd hrs (see COMM) METAR dur CARS hrs (see COMM) O/T LWIS	
RWY DATA RCR	Rwy 13(126°)/31(306°) 4001x98 GRVL Thld 31 displ 65'. Opr Win maint 15-16Z± Mon-Fri Oct 16-Apr 15 exc hols, O/T 2 hrs PN, ctc 867-875-7642 or 867-394-3220/5441/4405. Call out chg may be levied. Sum maint 15-16Z± Mon, Wed, Fri, exc hols Apr 16-Oct 15, O/T 2 hr PN ctc 867-875-7642 or 867-394-3220/5441/4405. Call out chg may be levied. PLR/PCN Rwy compacted snow & gravel mix during win conds.	
LIGHTING	13-AS(TE ME) P1, 31-AS(TE ME) P1 ARCAL-122.1 type J. PAPI not avbl outside CARS hrs ops.	
COMM MF APRT RDO	aprt rdo ltd hrs O/T tfc 122.1 5NM 3500 ASL (CAR 602.98) 122.1 (V) 15-23Z± Mon-Fri, exc federal observed hols.	
PRO	For IFR clnc, phone Edmonton FIC prior to dep.	
CAUTION	First 200' Rwy 31 soft May to Sep.	

NORTHWEST TERRITORIES

AERODROME / FACILITY DIRECTORY

FORT SIMPSON (GREAT SLAVE NO. 1) NT (Heli)**CFS2**

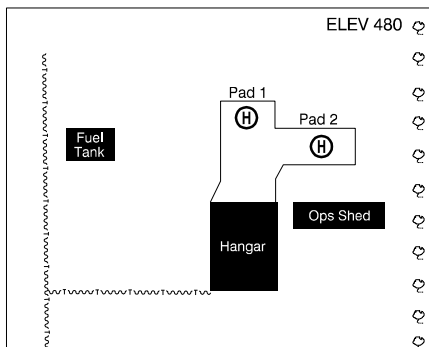
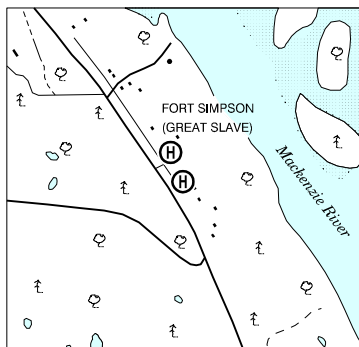
REF	N61 50 18 W121 19 35 2.4SE 21°E (2013) UTC-7(6) Elev 500' A5029	
OPR	Great Slave Helicopters 867-695-2326/867-873-2081 Reg PPR	
FLT PLN		
FIC ACC CARS	Edmonton 866-WXBRIEF (Toll free within Canada) or 866-541-4102 (Toll free within Canada & USA) Edmonton IFR 888-358-7526 867-695-2491	
HELI DATA	PAD 1: 16' x 40' concrete PAD 2: 16' x 40' concrete	
COMM		
RCO MF	Edmonton rdo 123.475 (FISE) 296.6 (FISE) 126.7 (bcst) (U) Fort Simpson aprt rdo 122.2 (V) 15NM centered on Fort Simpson A/D 5NM ESE 3600 ASL (CAR 602.98)	
PRO	Arr/dep 000°-090° deg, apch fr river side of pad only to avoid bldgs and pwr lines.	
CAUTION	200 AGL comm twr 150' SW of hgr.	

NORTHWEST TERRITORIES

AERODROME / FACILITY DIRECTORY

FORT SIMPSON (GREAT SLAVE NO. 2) NT (Heli)

CFD8



REF	N61 50 12 W121 19 30 2.5SE 21°E (2013) UTC-7(6) Elev 480' A5029
OPR	Great Slave Helicopters 867-695-2326 or 867-873-2081 Reg PPR
FLT PLN	
FIC	Edmonton 866-WXBRIEF (Toll free within Canada) or 866-541-4102 (Toll free within Canada & USA)
ACC	Edmonton IFR 888-358-7526
CARS	867-695-2491
HELI DATA	Pad 1: 15' x 50' concrete Pad 2: 12' x 50' concrete
COMM	
RCO	Edmonton rdo 123.475 (FISE) 296.6 (FISE) 126.7 (bcst) (U)
MF	Fort Simpson aprt rdo 122.2 (V) 15NM centered on Fort Simpson A/D 5NM ESE 3600 ASL (CAR 602.98)
PRO	All apch fr river side of pad.
CAUTION	Hydro line along N bdry of property 130' N of hangar.

NORTHWEST TERRITORIES

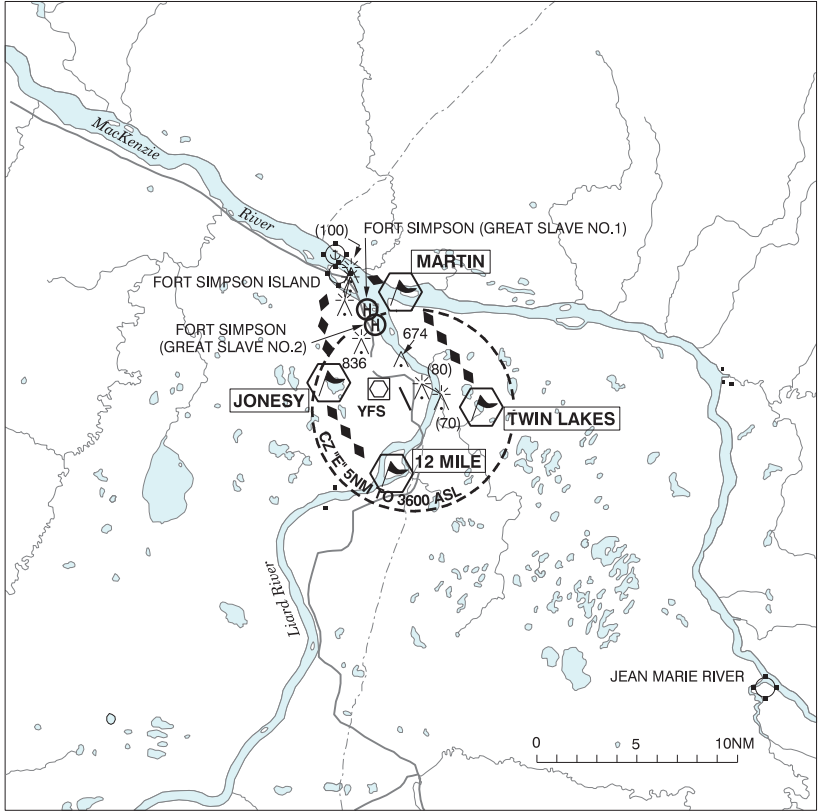
AERODROME / FACILITY DIRECTORY

FORT SIMPSON ISLAND NT

CET4

REF	N61 52 00 W121 21 58 Adj 21°E (2012) UTC-7(6) Elev 405' A5029	
OPR	Airports North Ltd 867-695-2263/2505 Reg Ldg fees PPR	
PF	C-1,2,3,4,5,6	
FLT PLN		
FIC	Edmonton 866-WXBRIEF (Toll free within Canada) or 866-541-4102 (Toll free within Canada & USA)	
ACC	Edmonton IFR 888-358-7526	
CARS	867-695-2491	
RWY DATA	Rwy 13(132°)/31(312°) 3000x100 gravel/snow Thlds rwy 13 & 31 displ 1000'.	
TWY	Twy A & B day use only.	
RCR	Opr Ltd win maint	
COMM		
RCO	Edmonton rdo 123.475 (FISE) 296.6 (FISE) 126.7 (bcst) (U)	
MF	Fort Simpson aprt rdo 122.2 (V) 15NM centered on Fort Simpson A/D 7.4NM ESE 3600 ASL (CAR 602.98)	
PRO	Rgt hand circuits Rwy 13 (CAR 602.96).	
CAUTION	First 300' Rwy 13 soft Apr til Jun. Extv migratory bird activity May-Oct.	

FORT SIMPSON VFR TERMINAL PROCEDURES CHART



NORTHWEST TERRITORIES

AERODROME / FACILITY DIRECTORY

FORT SIMPSON NT

CYFS

REF	N61 45 37 W121 14 12 7.4ESE 19°E (2019) UTC-7(6) Elev 556' A5029 LO5 HI2 CAP	
OPR	Govt of Northwest Territories 867-695-2471 Emerg/Incident rpt 877-989-1400 1430-2330Z±, 0130-0230Z± Mon-Fri, 1600-1645Z± Sat, 0150-0230Z± Sun, ltd maint for sked pax flts dur statutory hols, O/T 2 hr PN, ctc CARS. Call out chg may be levied. Cert	
PF	A-1 avbl 1530-2330Z± Mon-Fri C-2,3,4,5	
FLT PLN		
FIC	Edmonton 866-WXBRIEF (Toll free within Canada) or 866-541-4102 (Toll free within Canada & USA)	
ACC	Edmonton IFR 888-358-7526	
CARS	867-695-2491	
WX	METAR H24. TAF H24, issue times: 00, 06, 12, 18Z.	
SERVICES		
FUEL	100 LL, JA-1, SP, HPR, 15-24Z± Mon-Fri (call 20 min prior arr) O/T 1 hr PN. Call out chg will be levied. Nogha Construction Ltd. 867-695-6533.	
S	4,6	
RWY DATA	Rwy 14(137°)/32(317°) 6000x150 ASPH Rwy 14 up 0.33% first 3000'	
RWY CERT	Rwy 14/32 AGN V	
TWY	Twy B, C and D closed Oct 1 to May 15	
RCR	Opr CRFI & win maint avbl 1500-2330Z± Mon-Fri exc hols, O/T 2 hrs PN, ctc CARS. Call out chg may be levied. PLR/PCN	
LIGHTING	14-(TE ME) P2, 32-(TE ME) P2 ARCAL-122.2 type K	
COMM		
RCO	Edmonton rdo 123.475 (FISE) 296.6 (FISE) 126.7 (bcst) (U)	
MF	aprt rdo 122.2 (V) 15NM 3600 ASL (CAR 602.98)	
PAL	Edmonton Ctr 135.4	
APRT RDO	122.2 (V)	
NAV		
VOR/DME	YFS 117.9 Ch 126 N61 46 26 W121 17 56 (590')	
PRO	PPR before "hot refuelling" procedures may be used.	

NORTHWEST TERRITORIES

AERODROME / FACILITY DIRECTORY

FORT SMITH (DISTRICT) NT (Heli)

CEC5

REF	N60 00 11 W111 54 34 Adj W 15°E (2014) UTC-7(6) Elev 665' A5023 A5030	
OPR	Dept of Environment & Natural Resources, Govt of Northwest Territories 867-872-6400 Cert PPR	
FLT PLN		
FIC	Edmonton 866-WXBRIEF (Toll free within Canada) or 866-541-4102 (Toll free within Canada & USA)	
ACC CARS	Edmonton IFR 888-358-7526 867-872-2376	
HELI DATA	FATO/TLOF 30' dia CONC Safety Area 115' x 128'	
RCR	3 parking pads 30' dia concrete No win maint.	
COMM		
RCO	Edmonton rdo 123.55 (FISE) 239.8 (FISE) (U)	
MF	aprt rdo 122.2 5NM centred on Fort Smith A/D 1.9NM WSW 3700 ASL (CAR 602.98)	
APRT RDO	122.2 (V)	
PRO	S arr/dep path 217°, W arr/dep path 289°, N arr/dep path 357° Do not overfly built up area to E/NE (H3)	
CAUTION	P-lines S of A/D	

NORTHWEST TERRITORIES

AERODROME / FACILITY DIRECTORY

FORT SMITH NT

CYSM

REF	N60 01 13 W111 57 43 16°E (2013) UTC-7(6) Elev 673' A5023 A5030 LO5 HI2 CAP	
OPR	Govt of Northwest Territories 867-872-2007/0207 Emerg/Incident rpt 877-989-1400 1400-0130Z† Mon-Fri, 1430-0030Z† Sun Apr 16-Oct 15, O/T 2 hr PN ctc 867-872-2376, call out chg may be levied. 13-02Z† Mon-Fri, 1400-0030Z† Sun Oct 16-Apr 15, O/T 2 hr PN ctc 867-872-2376/0208, call out chg may be levied. Ltd maint provided for sked pax flts during statutory hols. Cert	
PF	A-1 C-2,3,4,5,6	
FLT PLN		
FIC	Edmonton 866-WXBRIEF (Toll free within Canada) or 866-541-4102 (Toll free within Canada & USA)	
ACC	Edmonton IFR 888-358-7526	
CARS	867-872-2376	
WX	METAR H24. TAF H24, issue times: 00, 06, 12, 18Z.	
SERVICES	Call out chg may be levied after hrs.	
FUEL	100LL, JA-1 15-24Z† Mon-Fri Northwestern Air Lease 867-872-2216 or 877-872-2216. Self-serve cardlock accepts major cards.	
OIL	BP 2380, 15W50	
S	2,4,6	
SUP FL	D-ice ltd svc, type 4 only. Ctc Northwestern Air Lease at 867-872-2216 ext 351.	
RWY DATA	Rwy 12(117°)/30(297°) 6001x100 ASPH Rwy 03(026°)/21(206°) 1797x100 GRVL/ASPH, 600' ASPH	
RWY CERT	Rwy 12/30 AGN IIIB Rwy 03/21 AGN I	
RCR	Opr CRFI & win maint 13-02Z† Mon-Fri, 1400-0030Z† Sun, exc statutory hols Oct 16-Apr 15, O/T 2 hr PN ctc 867-872-2376/0208. Rwy 03/21 clsd Oct 20-Apr 30. PLR/PCN.	
LIGHTING	12-AO(TE ME) P2, 30-AO(TE ME) P2	
COMM		
RCO	Edmonton rdo 123.55 (FISE) 239.8 (FISE) (U)	
MF	aprt rdo 122.2 5NM 3700 ASL (CAR 602.98)	
APRT RDO	122.2 (V)	
NAV		
VOR/DME	YSM 112.4 Ch 71 N60 01 12 W111 58 10 (692')	
PRO	PPR fr APM before "hot refuelling" procedures may be used.	
CAUTION	Radiosonde balloon launches fr N60 02 W111 56 (1.3NM NE thld Rwy 12) at 1115Z-1129Z & 2315Z-2329Z dly.	

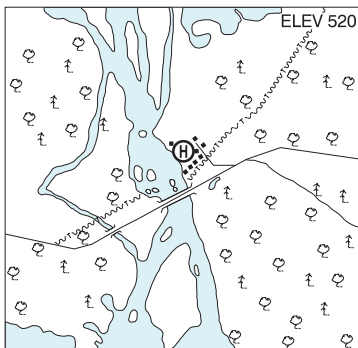
NORTHWEST TERRITORIES

AERODROME / FACILITY DIRECTORY

FRANK CHANNEL (FORESTRY) NT (Heli)

CFB2

REF	N62 47 10 W115 56 45 19°E (2013) UTC-7(6) Elev 520' A5030
OPR	Dept of Environment & Natural Resources, Govt of Northwest Territories 867-920-7184 Reg PPR
FLT PLN	
FIC	Edmonton 866-WXBRIEF (Toll free within Canada) or 866-541-4102 (Toll free within Canada & USA)
HELI DATA	3 pads 30' dia
COMM	
ATF	tfc 123.2 5NM 3500 ASL
CAUTION	P-Lines and bridge to the E.

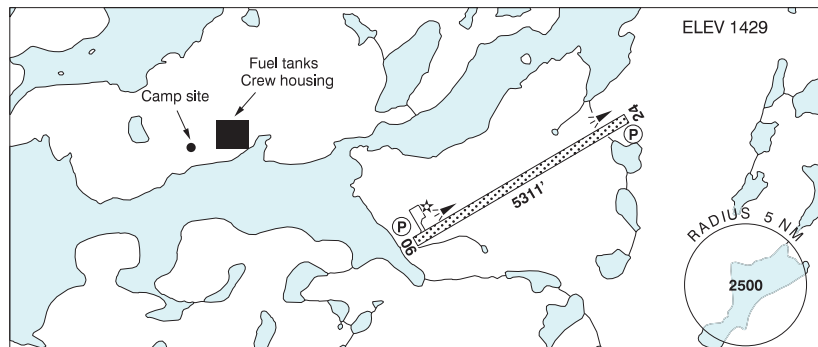


NORTHWEST TERRITORIES

AERODROME / FACILITY DIRECTORY

GAHCHO KUE NT

CGK2



REF	N63 26 07 W109 08 41 1.4ESE 14°E (2014) UTC-7(6) Elev 1429' A5030 CAP
OPR	De Beers Canada 867-679-5842 Reg PPR
FLT PLN	
FIC	Edmonton 866-WXBRIEF (Toll free within Canada) or 866-541-4102 (Toll free within Canada & USA)
ACC	Edmonton IFR 888-358-7526
WX	AUTO (see COMM)
RWY DATA	Rwy 06(060°T)/24(240°T) 5311x148 GRVL
RCR	Opr
LIGHTING	06-(TE HI) P2, 24-(TE HI) P2 ARCAL-123.35 type K
COMM	
ATF	UNICOM (AU) ltd hrs O/T tfc 123.35 5NM 4400 ASL
AUTO	122.55
CAUTION	Blasting up to 3500 ASL within 2.5NM of A/D.

NORTHWEST TERRITORIES

AERODROME / FACILITY DIRECTORY

GAMÈTÌ / RAE LAKES NT

CYRA

REF	N64 06 58 W117 18 35 17°E (2020) UTC-7(6) Elev 716' A5029 A5035 LO5 CAP	
OPR	Govt of Northwest Territories 867-767-9091 Emerg/Incident rpt ctc 867-445-5518 or 877-989-1400 2050-2150Z† Mon-Fri, 2250-2350Z† Sun, O/T 1 hr PN, ctc 867-997-3441. Call out chg may be levied. Cert	
PF	C-1,2,4,5	
FLT PLN		
FIG	Edmonton 866-WXBRIEF (Toll free within Canada) or 866-541-4102 (Toll free within Canada & USA)	
ACC	Edmonton IFR 888-358-7526	
CARS	867-997-3028 ltd hrs (see COMM)	
WX	METAR dur CARS hrs (see COMM) O/T LWIS TAF 17-01Z† Sun-Fri, 18-21Z† Sat	
RWY DATA	Rwy 14(136°T)/32(316°T) 3000x98 GRVL	
RWY CERT	Rwy 14/32 AGN II	
RCR	Opr Win maint avbl 16-01Z† Sun-Fri O/T 1 hr PN 867-997-3441 Call out chg may be levied. PLR/PCN Rwy compacted snow & gravel mix dur win conds.	
LIGHTING	14-AS(TE ME) AP, 32-AS(TE ME) AP, ARCAL-122.1 type K key mic 7 times for AS APAPI 14/32 avbl low intensity only	
COMM		
MF	aprt rdo ltd hrs O/T tfc 122.1 5NM 3700 ASL (CAR 602.98)	
APRT RDO	122.1 (V) 15-01Z† Sun-Fri, 16-21Z† Sat	
CAUTION	Caribou may be on or in vic of rwy.	

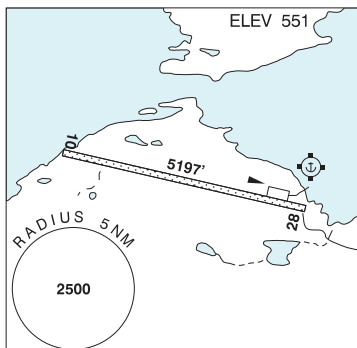
NORTHWEST TERRITORIES

AERODROME / FACILITY DIRECTORY

GREAT BEAR LAKE NT

CFF4

REF	N66 42 11 W119 43 02 1S 19°E (2021) UTC-7(6) Elev 551' A5035 LO5
OPR	Plummers Great Bear Lake Lodge 204-774-5775 Reg PPR
FLT PLN	
FIC	Edmonton 866-WXBRIEF (Toll free within Canada) or 866-541-4102 (Toll free within Canada & USA)
RWY DATA	Rwy 10(099°T)/28(279°T) 5197x100 gravel Rwy 10 up 0.71%
RCR	Opr No win maint
COMM	
ATF	UNICOM (AU) ltd hrs O/T tfc 122.8 5NM 3600 ASL



NORTHWEST TERRITORIES

AERODROME / FACILITY DIRECTORY

HAY RIVER (DISTRICT) NT (Heli)

CET5

REF	N60 47 04 W115 49 33 1.5SW 16°E (2020) UTC-7(6) Elev 550' A5030	
OPR	Dept of Environment & Natural Resources, Govt of Northwest Territories 867-875-5550 Reg PPR	
FLT PLN		
FIC	Edmonton 866-WXBRIEF (Toll free within Canada) or 866-541-4102 (Toll free within Canada & USA)	
ACC CARS	Edmonton IFR 888-358-7526 867-874-2441	
HELI DATA	3 pads 43' dia 100' x 100'	
RCR	No win maint	
COMM		
RCO	Edmonton rdo 123.275 (FISE) (U) 126.7 (bcst)	
MF	aprt rdo 122.3 5NM centred on Hay River/Merlyn Carter Airport A/D 3.6NM W 3600 ASL (CAR 602.98)	
PRO	Arr/dep route via Hay River	
CAUTION	P-lines to the west.	

NORTHWEST TERRITORIES

AERODROME / FACILITY DIRECTORY

HAY RIVER / MERLYN CARTER AIRPORT NT

CYHY

REF	N60 50 23 W115 46 58 1.5N 16°E (2020) UTC-7(6) Elev 541' A5030 LO5 HI2 CAP	
OPR	Govt of Northwest Territories 867-874-2353, 867-875-7316 Emerg/Incident rpt 877-989-1400 1330-0100Z± Mon-Thu, 1330-2330Z± 2359-0100Z± Fri, 1330-2200Z± Sun Oct 16-Apr 15, 1300-2230Z± 23-24Z± Mon-Fri, 14-15Z± 2030-2130Z± Sun Apr 16-Oct 15, O/T 1 hr PN ctc 867-874-2441 or 867-875-7316. Call out chg may be levied. Cert	
PF	A-1,3,6 avbl 15-23Z± Mon-Sat C-2,4,5	
FLT PLN		
FIG	Edmonton 866-WXBRIEF (Toll free within Canada) or 866-541-4102 (Toll free within Canada & USA)	
ACC	Edmonton IFR 888-358-7526	
CARS	867-874-2441	
WX	METAR H24. TAF H24, issue times: 00, 06, 12, 18Z.	
SERVICES	Call out chg may be levied.	
FUEL	100LL, JA-1 15-24Z± Mon-Fri 867-874-8500 O/T 867-874-1004	
OIL	All	
S	2,3,4,5,6	
RWY DATA	Rwy 14(139°)/32(319°) 6000x150 ASPH Rwy 05(049°)/23(229°) 4001x150 GRVL/ASPH, 2950' GRVL	
RWY CERT	Rwy 14/32 AGN III B Rwy 05/23 AGN II	
RCR	Opr CRFI & win maint 1330-0100Z± Mon-Thu, 1330-2330Z± 2359-0100Z± Fri, 1330-2200Z± Sun Oct 15-Apr 15, O/T 1 hr PN ctc 867-874-2441 or 867-875-7316. Call out chg may be levied. PLR/PCN. Rwy 05/23 compacted snow & grvl mix during win conds.	
LIGHTING	05-(TE ME), 14-(TE HI) P2, 23-(TE ME), 32-AE(non-std 1561') (TE HI) ARCAL-122.3 type K	
COMM		
RCO	Edmonton rdo 123.275 (FISE) (U) 126.7 (bcst)	
MF	aprt rdo 122.3 5NM 3600 ASL (CAR 602.98)	
PAL	Edmonton Ctr 133.85	
APRT RDO	122.3 (V)	
NAV		
VOR/DME	YHY 113.9 Ch 86 N60 50 11 W115 48 12 (560')	
ILS	IHY 110.3 (Rwy 32)	
PRO	Rgt hand circuits Rwys 14 & 23 (CAR 602.96). PPR fr APM before "hot refuelling" procedures may be used.	
CAUTION	Sandhill cranes nesting on A/D, May-Sep. Lgtd twr 636 ASL (108 AGL) aprx 1.3NM NE of A/D. Cable crossing 1 NM S. Trains crossing and parking within Obstacle Limitation Surface zone Rwy 32.	

NORTHWEST TERRITORIES

AERODROME / FACILITY DIRECTORY

INUUVIK (MIKE ZUBKO) NT

CYEV

REF	N68 18 14 W133 28 59 6.5E 20°E (2021) UTC-7(6) Elev 222' A5034 A5040 LO5 HI2 CAP	
OPR	Govt of Northwest Territories 867-777-2467 Emerg/Incident rpt 877-989-1400 1755-1905Z† Sun, 15-02Z† Mon, 15-03Z† Tue, 15-01Z† Wed & Fri, 1500-0130Z† Thu, 1730-2125Z† & 2230-0015Z† Sat May 1-Oct 31, 1945-2125Z† Sat Nov 1-Apr 30, ltd maint provided for sked pax flts during statutory hols. O/T 1 hr PN ctc 867-678-0794/877-989-1400 Cert	
PF	A-1,3,6 avbl 1300-0400Z† A-2 avbl 1600-2200Z† Mon-Fri, 1900-2200Z† Sat, Sun & hols D-1,2,3,4,5,6	
CUST	AOE/15 888-226-7277 16-24Z† dly exc hols	
FLT PLN		
FIC	Edmonton 866-WXBRIEF (Toll free within Canada) or 866-541-4102 (Toll free within Canada & USA)	
ACC	Edmonton IFR 888-358-7526	
WX	METAR H24. TAF H24, issue times: 01, 07, 13, 19Z.	
SERVICES		
FUEL	100LL, JA-1 (FSII avbl), HPR	
OIL	Aeroshell 15W50	
S	1,2,4,6	
MIL CON	Arctic Petroleum Services 867-777-2682 Oprg hrs change frequently. Call stating requirements.	
RWY DATA	Rwy 06(065°)/24(245°) 6001x150 ASPH Thld 06 displ 896' Rwy 06 up 0.45% RAG: Rwy 06/24 BAK-12, B, (1500') NOTAM issued when cable is up	
RWY CERT	Rwy 06/24 AGN IIIB	
TWY CERT	Twy C AGN IIIA	
TWY	Twy B, C - no VCS, Twy E - PVT, no VCS	
RCR	Opr CRFI & win maint 1755-1905Z† Sun, 15-02Z† Mon, 15-03Z† Tue, 15-01Z† Wed & Fri, 1500-0130Z† Thu, 1945-2125Z† Sat Nov 1-Apr 30, ltd maint provided for sked pax flt during statutory hols. O/T 1 hr PN ctc 867-678-0794/877-989-1400. PLR/PCN	
LIGHTING	06-AN(TE HI), 24-AO(TE HI) P2	
COMM		
RADIO	122.3 262.7 (E) (emerg only 867-777-2522)	
RCO	Edmonton rdo 123.375 (FISE) 126.7 (bcst) 5680 (FISE)	
ATIS	128.5 ltd hrs	
MF	rdo 122.3 5NM 3200 ASL (CAR 602.98)	
PAL	Edmonton Ctr 132.4	
NAV		
NDB	INUUVIK EV 254 (M) N68 19 34 W133 35 34	
VOR/DME	INUUVIK YEY 112.5 Ch 72 N68 18 29 W133 32 54 (268')	
DME	INUUVIK IEV 110.3 Ch 40 N68 18 09 W133 29 54 (224')	
ILS	IEV 110.3 (Rwy 06) RVR LOC reliable only within 10° either side of centreline.	

NORTHWEST TERRITORIES

AERODROME / FACILITY DIRECTORY

INUVIK (MIKE ZUBKO) NT (Cont'd)

CYEV

PRO	Due to jet blast concerns, acft proh turnaround near arrestor system located 1500' fr thresholds.
CAUTION	Radiosonde balloon launches fr N68 19 00 W133 31 00 (0.8NM NW thld 06) at 1115Z to 1129Z & 2315Z to 2329Z dly. INUVIK/Shell Lake water A/D 3NM W. When pilots advs DND is on site, acft requested to remain clear of DND hg. Ltd graded areas outside rwy edge.

NORTHWEST TERRITORIES

AERODROME / FACILITY DIRECTORY

JEAN MARIE RIVER NT

CET9

REF	N61 31 21 W120 37 30 Adj 21°E (2012) UTC-7(6) Elev 457' A5029 LO5 CAP	
OPR	Govt of Northwest Territories 867-695-2471 Emerg/Incident rpt 877-989-1400 Reg	
FLT PLN	FIC Edmonton 866-WXBRIEF (Toll free within Canada) or 866-541-4102 (Toll free within Canada & USA)	
RWY DATA	Rwy 11(109°)/29(289°) 2512x57 gravel/clay Rwy 11 up 0.43% first 1250'	
RCR	Opr Win maint 1600-2330Z± Mon-Fri exc hols, O/T 2 hrs PN, ctc 867-875-2914. Call out chg may be levied. Rwy compacted snow & grvl mix during win conds.	
LIGHTING	11-(TE ME), 29-(TE ME) ARCAL-123.2 type K	
COMM	ATF tfc 123.2 5NM 3500 ASL	
CAUTION	1200' of loose sand prior to Thld 11.	

NORTHWEST TERRITORIES

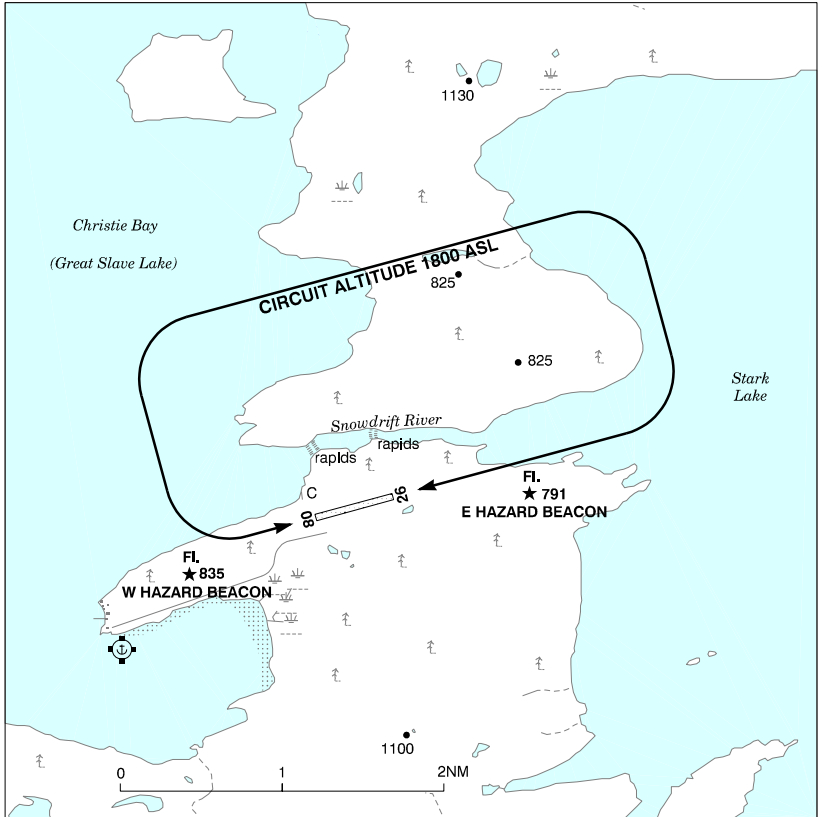
AERODROME / FACILITY DIRECTORY

KASBA LAKE NT

CJL8

REF	N60 17 31 W102 30 07 7°E (2013) UTC-6(5) Elev 1143' A5031 A5024 LO5 CAP	
OPR	Kasba Lake Lodge 250-248-3572 Fax 250-248-4576 Reg PPR	
PF	C-1,2,5 PN	
FLT PLN		
FIC	Edmonton 866-WXBRIEF (Toll free within Canada) or 866-541-4102 (Toll free within Canada & USA)	
ACC	Winnipeg IFR 888-834-3344 or 204-983-8337	
WX	ALTIMETER/WIND ltd hrs (see COMM)	
SERVICES	Prior arng only thru Opr	
FUEL	100LL, JB	
S	4 Jun-Sep	
RWY DATA	Rwy 02(020°)/20(200°) 6156x100 clay/gravel Rwy 02 down 0.58%	
RCR	Opr No win maint	
COMM		
ATF	UNICOM (AU) ltd hrs O/T tfc 122.8 5NM 4200 ASL	
CAUTION	Wildlife frequently on rwy.	

LUTSELK'E VFR TERMINAL PROCEDURES CHART



NORTHWEST TERRITORIES

AERODROME / FACILITY DIRECTORY

LUTSELK'E NT

CYLK

REF	N62 25 06 W110 40 56 1.1NE 16°E (2012) UTC-7(6) Elev 586' A5030 LO5 CAP	
OPR	Govt of Northwest Territories 867-767-9091 Emerg/Incident rpt ctc 867-445-5518 or 877-989-1400 1815-1915Z† Mon-Fri, 2345-0045Z† Wed & Fri, 1845-1945Z† Sat, 2045-2145Z† Sun, O/T 1 hr PN, ctc 867-370-3051/7004. Call out chg may be levied. Cert	
PF	C-1,2,4,5	
FLT PLN		
FIC	Edmonton 866-WXBRIEF (Toll free within Canada) or 866-541-4102 (Toll free within Canada & USA)	
ACC	Edmonton IFR 888-358-7526	
CARS	867-370-3826 Ltd hrs (see COMM)	
WX	METAR dur CARS hrs (see COMM) O/T LWIS TAF 17-01Z† Sun-Fri, 18-21Z† Sat	
RWY DATA	Rwy 08(078°T)/26(258°T) 3003x103 gravel Rwy 08 up 0.65% to mid-point. Rwy 26 up 0.96% to mid-point.	
RWY CERT	Rwy 08/26 AGN II	
RCR	Opr Maint avbl 16-01Z† Mon-Fri, 17-22Z† Sat-Sun, O/T 1 hr PN ctc 867-370-3051/7004. Call out chg may be levied. Rwy compacted snow & gravel mix during win conds.	
LIGHTING	08-AS(TE ME) AP, 26-AS(TE ME) AP ARCAL-122.1 type K key mic 7 times for AS. APAPI avbl medium ints only. Ngt ops not recommended unless hazard beacons oprg.	
COMM		
MF	aprt rdo ltd hrs O/T tfc 122.1 5NM 3600 ASL (CAR 602.98)	
APRT RDO	122.1 (V) 15-01Z† Sun-Fri, 16-21Z† Sat	
PRO	Circuit alt 1800 ASL. Rgt hand circuits Rwy 26 (CAR 602.96); pilots to extend downwind so that base leg is flown over Stark Lake as depicted on VTPC. PPR fr APM before "Hot Refuelling" procedures may be used.	
CAUTION	Only pilots familiar with lcl terrain should use aprt at ngt. Caribou may be on or in vic of rwy. Water A/D 2.4NM SW.	

NORTHWEST TERRITORIES

AERODROME / FACILITY DIRECTORY

NAHANNI BUTTE NT

CBD6

REF	N61 01 47 W123 23 18 19°E (2020) UTC-7 Elev 598' A5029 LO5 CAP	
OPR	Govt of Northwest Territories 867-695-2471 Emerg/Incident rpt 877-989-1400 Reg	
FLT PLN		
FIC	Edmonton 866-WXBRIEF (Toll free within Canada) or 866-541-4102 (Toll free within Canada & USA)	
ACC	Edmonton IFR 888-358-7526	
RWY DATA	Rwy 16(159°)/34(339°) 2554x49 gravel/earth	
RCR	Opr Win maint 16-22Z± Mon-Fri exc hols, O/T 2 hrs PN, ctc 867-364-0002. Call out chg may be levied. Rwy compacted snow & grvl mix during win conds.	
LIGHTING	16-(TE LO), 34-(TE LO) ARCAL-123.2 type J	
COMM		
ATF	tfc 123.2 5NM 3600 ASL	
CAUTION	Buffalo may stray on to rwy. Recommend low apch to verify rwy not obstructed prior to landing. Unmarked high terrain around A/D. Lgt for MEDEVAC and emerg use.	

NORTHWEST TERRITORIES

AERODROME / FACILITY DIRECTORY

NORMAN WELLS NT

CYVQ

REF	N65 16 53 W126 47 55 Adj NE 20°E (2019) UTC-7(6) Elev 237' A5034 A5035 LO5 HI2 CAP	
OPR	Govt of Northwest Territories 867-587-2451 Emerg/Incident rpt 877-989-1400 1430-0100Z± O/T 2 hr PN ctc 867-587-2555. Call out chg may be levied. Cert	
PF	A-1,7 C-2,3,4,5	
FLT PLN		
FIG	Edmonton 866-WXBRIEF (Toll free within Canada) or 866-541-4102 (Toll free within Canada & USA)	
ACC WX	Edmonton IFR 888-358-7526 METAR H24. TAF H24, issue times: 00, 06, 12, 18Z.	
SERVICES	Call out chg may be levied for one or more svcs	
FUEL	100LL, JA-1, HPR 14-23Z± O/T call out chg will be levied.	
OIL	All	
S	4,6	
PVT ADV	SRP Petroleum (Imperial Oil) 123.0 867-587-2746/2587	
MILCON	SRP Petroleum (World Fuel Services) 867-587-2746	
RWY DATA	Rwy 10(097°)/28(277°) 5998x150 CONC/ASPH	
RWY CERT	Rwy 10/28 AGN IIIB	
TWY	Twy C uncontrolled	
RCR	Opr CRFI & win maint avbl 1430-0100Z± Oct 1-Apr 30 O/T 2 hr PN 867-587-2555. Call out chg may be levied. PLR/PCN.	
LIGHTING	10-AO(TE ME) P2, 28-AO(TE ME) P2	
COMM		
RADIO	122.2 282.3 (E) (emerg only 867-587-2555)	
RCO	Edmonton rdo 123.275 (FISE) 126.7(bcst)	
MF	rdo 122.2 5NM 3200 ASL (CAR 602.98)	
PAL	Edmonton Ctr 134.825	
NAV		
NDB	VQ 326 (M) N65 15 11 W126 40 11	
VOR/DME	YVQ 112.7 Ch 74 N65 15 54 W126 43 27 (254')	
CAUTION	Radiosonde balloon launches fr N65 17 W126 45 (0.86NM NE Thld Rwy 28) at 1115-1129Z & 2315-2329Z dly. Extv bird activity Apr-Oct.	

NORTHWEST TERRITORIES

AERODROME / FACILITY DIRECTORY

OBRE LAKE / NORTH OF SIXTY NT

CKV4

REF	N60 18 56 W103 07 54 Adj E 8°E (2013) UTC-6(5) Elev 1202' A5024 A5031	
OPR	North of 60 Fishing Camps 612-819-3820 Reg PPR	
PF	B-1,2,5 PN Oprg Jul 1-Sep 30	
FLT PLN		
FIC	Edmonton 866-WXBRIEF (Toll free within Canada) or 866-541-4102 (Toll free within Canada & USA)	
ACC	Winnipeg IFR 888-834-3344 or 204-983-8337	
SERVICES		
FUEL	100LL, JA-1, MG-1, (Floatbase 100LL only), PN	
OIL	100	
RWY DATA	Rwy 03(037°)/21(217°) 6033x100 clay/gravel/sand.	
RCR	Opr No win maint. Rwy 03 first 1000' soft when wet.	
COMM		
ATF	UNICOM (AU) ltd hrs (Jun 01-Aug 15) O/T tfc 122.8 5NM 4200 ASL	

NORTHWEST TERRITORIES

AERODROME / FACILITY DIRECTORY

PAULATUK (NORA ALIQATCHIALUK RUBEN) NT

CYPC

REF	N69 21 38 W124 04 33 21°E (2018) UTC-7(6) Elev 15' A5041 LO5 CAP	
OPR	Govt of Northwest Territories 867-777-2467 Emerg/Incident rpt 877-989-1400 1630-1745Z† Tue, 2200-2315Z† Wed & Fri, exc hols, O/T 1 hr PN ctc 867-580-3037/3310 or 867-788-0119/0143/1066. Call out chg may be levied. Cert	
PF	C-1,4,5	
FLT PLN	<p>FIG Edmonton 866-WXBRIEF (Toll free within Canada) or 866-541-4102 (Toll free within Canada & USA)</p> <p>ACC Edmonton IFR 888-358-7526</p> <p>CARS 867-580-3111 Ltd hrs</p> <p>WX METAR dur CARS hrs (see COMM) O/T LWIS TAF 16-24Z† Mon-Sat, issue times: 16,19Z (DT 15, 19Z). TAF 16-19Z† Sun, issue times: 16Z†.</p>	
SERVICES	Call out chg may be levied for svcs	
FUEL	JA ctc aprt rdo O/T 2 hr PN ATBA VAN CAN 867-788-0908	
RWY DATA	Rwy 02(021°T)/20(201°T) 4003x99 gravel	
RWY CERT	Rwy 02/20 AGN IIIA	
TWY CERT	Twy A AGN II	
RCR	Opr Win maint 16-24Z† Mon-Fri exc hols, O/T 1 hr PN ctc 867-580-3037/3310 or 867-788-0119/0143/1066. Call out chg may be levied. Rwy compacted snow & grvl mix during win conds.	
LIGHTING	02-AS(TE ME) AP, 20-AS(TE ME) AP ARCAL-122.1 type K key mic 7 times for AS	
COMM	<p>MF aprt rdo ltd hrs O/T tfc 122.1 5NM 3100 ASL (CAR 602.98)</p> <p>APRT RDO 122.1 (V) 14-24Z† Mon-Sat, 14-19Z† Sun.</p>	
NAV	<p>NDB YPC 276 (M) N69 21 03 W124 04 32 Unmonitored when CARS clsd.</p>	
CAUTION	Subsidence, turbulence, and adverse cross-wind cond may be encountered.	

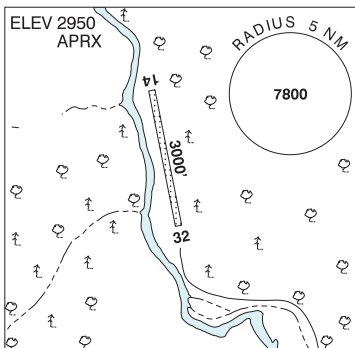
NORTHWEST TERRITORIES

AERODROME / FACILITY DIRECTORY

PRAIRIE CREEK NT

CBH4

REF	N61 33 53 W124 48 54 19°E (2020) UTC-8(7) Elev 2950' aprx A5029
OPR	Canadian Zinc Corp 604-688-2001 SATCOM 600-700-2454 Reg PPR
FLT PLN	
FIC	Edmonton 866-WXBRIEF (Toll free within Canada) or 866-541-4102 (Toll free within Canada & USA)
ACC	Edmonton IFR 888-358-7526
RWY DATA	Rwy 14/32 3000x100 GRVL
RCR	Opr No maint Clsd 1 Sep-30 Apr
COMM	
ATF	UNICOM ltd hrs O/T tfc 122.8 5NM 6000 ASL



NORTHWEST TERRITORIES

AERODROME / FACILITY DIRECTORY

RAE / EDZO NT

CRE2

REF	N62 46 00 W116 05 01 1.4SW 17°E (2021) UTC-7(6) Elev 587' A5029	
OPR	Tli Cho Construction 867-392-6039 Reg PN	
PF	C-1,2,3,4,5	
FLT PLN		
FIC	Edmonton 866-WXBRIEF (Toll free within Canada) or 866-541-4102 (Toll free within Canada & USA)	
ACC	Edmonton IFR 888-358-7526	
SERVICES		
S	4	
RWY DATA	Rwy 11/29 3372x98 GRVL	
RCR	Opr Ltd win maint 1 hr PN	
LIGHTING	11(TE LO), 29(TE LO) ARCAL-123.2 type J	
COMM		
ATF	tfc 123.2 5NM 3600 ASL	

NORTHWEST TERRITORIES

AERODROME / FACILITY DIRECTORY

SACHS HARBOUR (DAVID NASOGALUAK JR. SAARYUAQ) NT

CYSY

REF	N71 59 37 W125 14 29 Adj N 20°E (2020) UTC-7(6) Elev 283' A5040 A5041 A5045 LO5 CAP	
OPR	Govt of Northwest Territories 867-777-2467 Emerg/Incident rpt 877-989-1400 1700-1815Z† Mon, 2230-2345Z† Tue & Thu, exc hols, O/T 1 hr PN ctc 867-690-4351/3501/4670/2222. Call out chg may be levied. Cert	
PF	A-1 C-2,4,5	
FLT PLN	<p>FIC Edmonton 866-WXBRIEF (Toll free within Canada) or 866-541-4102 (Toll free within Canada & USA)</p> <p>ACC Edmonton IFR 888-358-7526</p> <p>CARS 867-690-4261 Ltd hrs (see COMM)</p> <p>WX METAR dur CARS hrs (see COMM) O/T LWIS TAF 16-24Z† Mon-Sat, issue times: 16, 19Z (DT 15,19Z). TAF 16-19Z† Sun, issue times: 16Z†.</p>	
SERVICES	Call out chg may be levied	
FUEL	JA Mon-Fri 18-01Z†, Sat 20-22Z† 867-690-4222 O/T 867-690-4585/3214 PN	
RWY DATA	Rwy 08(084°T)/26(264°T) 4002x98 GRVL Rwy 08 down 0.33%	
RWY CERT	Rwy 08/26 IIIA	
TWY CERT	Twy A II	
RCR	Opr Win maint 16-24Z† Mon-Fri exc hols, O/T 1 hr PN, 867-690-4351/3501/4670/2222 Call out chg may be levied. Rwy compacted snow & grvl mix during win conds.	
LIGHTING	08-AS(TE ME) P1, 26-AS(TE ME) P1 ARCAL-122.1 type K AS lgt avbl on hi into only.	
COMM	<p>RCO Edmonton rdo 123.55 (FISE) 126.7 (bcst)</p> <p>MF apt rdo ltd hrs O/T tfc 122.1 5NM 3300 ASL (CAR 602.98)</p> <p>APRT RDO 122.1 (V) 14-24Z† Mon-Sat, 14-19Z† Sun.</p>	
NAV	<p>NDB YSY 321 (M) N71 59 29 W125 18 52</p>	

NORTHWEST TERRITORIES

AERODROME / FACILITY DIRECTORY

SAMBAA K'E NT

CEU9

REF	N60 25 25 W121 16 11 Adj 20°E (2014) UTC-7(6) Elev 1666' A5029 LO5 CAP RCAP	<p>The map shows the aerodrome location relative to Trout Lake. A runway labeled '3501' is depicted with an arrow indicating direction. A circular area with a radius of 5 NM is centered on the runway, with the number '3500' inside. The elevation is noted as 'ELEV 1666'. Various symbols, including 'P' in a circle and 't', are scattered across the terrain.</p>
OPR	Govt of Northwest Territories 867-695-2471 Emerg/Incident rpt 877-989-1400 Reg	
PF	C-1,5	
FLT PLN		
FIC	Edmonton 866-WXBRIEF (Toll free within Canada) or 866-541-4102 (Toll free within Canada & USA)	
ACC	Edmonton IFR 888-358-7526	
SERVICES		
S	4,6	
RWY DATA	Rwy 04(035°)/22(215°) 3501x98 GRVL	
RCR	Opr Win maint 1600-2330Z† Mon-Fri exc hols, O/T 2 hrs PN, ctc 867-695-6688. Call out chg may be levied. Rwy compacted snow & grvl mix during win conds.	
LIGHTING	04-AS(TE ME) AP, 22-AS(TE ME) AP ARCAL-123.2 type K	
COMM		
ATF	tfc 123.2 5NM 4700 ASL	

NORTHWEST TERRITORIES

AERODROME / FACILITY DIRECTORY

SNAP LAKE NT

CSK6

REF	N63 35 37 W110 54 20 Adj 15°E (2016) UTC-7(6) Elev 1524' A5030 LO5 HI2 CAP	
OPR	De Beers Canada 867-767-8555 Reg PPR	
FLT PLN		
FIC	Edmonton 866-WXBRIEF (Toll free within Canada) or 866-541-4102 (Toll free within Canada & USA)	
ACC	Edmonton IFR 888-358-7526	
RWY DATA	Rwy 09(085°T)/27(265°T) 5282x150 gravel	
RCR	Opr Regular maint all year.	
LIGHTING	09-(TE LO) P2, 27-(TE LO) P2	
COMM		
ATF	UNICOM (AU) 11-23Z± O/T tfc 123.5 5NM 4600 MSL	
CAUTION	Blasting all quadrants, ocsl by NOTAM.	

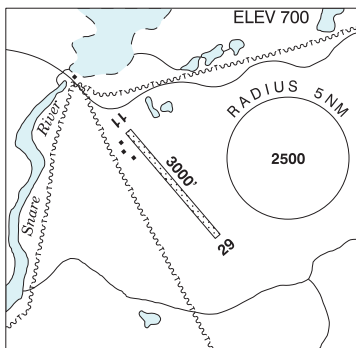
NORTHWEST TERRITORIES

AERODROME / FACILITY DIRECTORY

SNARE RIVER NT

CEV9

REF	N63 26 W116 11 17°E (2020) UTC-7(6) Elev 700' A5029
OPR	Northwest Territories Power Corp, Yellowknife 867-669-3300 Reg PPR
FLT PLN	
FIC	Edmonton 866-WXBRIEF (Toll free within Canada) or 866-541-4102 (Toll free within Canada & USA)
RWY DATA	Rwy 11(124°)/29(304°) 3000x75 sand
RCR	Opr Ltd maint. Rwy soft in spring.
COMM	
ATF	UNICOM ltd hrs O/T tfc 122.8 5NM 3700 ASL
CAUTION	Caribou may be on or in vic of rwy.



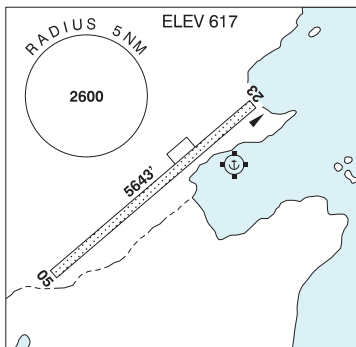
NORTHWEST TERRITORIES

AERODROME / FACILITY DIRECTORY

TALTHEILEI NARROWS NT

CFA7

REF	N62 35 50 W111 32 29 16°E (2012) UTC-7(6) Elev 617' A5030 LO5
OPR	Plummers Great Slave Lake Lodge 204-774-5775 Reg PPR
FLT PLN	<p>FIC Edmonton 866-WXBRIEF (Toll free within Canada) or 866-541-4102 (Toll free within Canada & USA)</p> <p>ACC Edmonton IFR 888-358-7526</p>
RWY DATA	Rwy 05(049°T)/23(229°T) 5643x120 gravel Rwy 23 up 1.38% Summer months only PN
COMM	ATF UNICOM (AU) ltd hrs O/T tfc 122.8 5NM 3600 ASL
PRO	Prior to dep, call opr to confirm Altimeter Setting avbl on arr.
CAUTION	Wildlife in vic of rwy.



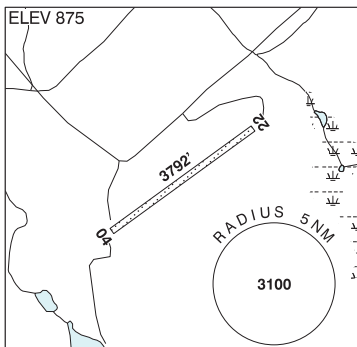
NORTHWEST TERRITORIES

AERODROME / FACILITY DIRECTORY

TALTSON RIVER NT

CFW5

REF	N60 23 39 W111 20 50 14°E (2020) UTC-7 Elev 875' A5023 A5030
OPR	Northwest Territories Power Corp 867-872-7100 Reg PPR
FLT PLN	
FIC	Edmonton 866-WXBRIEF (Toll free within Canada) or 866-541-4102 (Toll free within Canada & USA)
RWY DATA	Rwy 04(040°)/22(220°) 3792x50 SAND/GRVL
RCR	Opr Ltd win maint. Soft in spring.
COMM	
ATF	tfc 123.2 5NM 3900 ASL



NORTHWEST TERRITORIES

AERODROME / FACILITY DIRECTORY

TUKTOYAKTUK / JAMES GRUBEN NT

CYUB

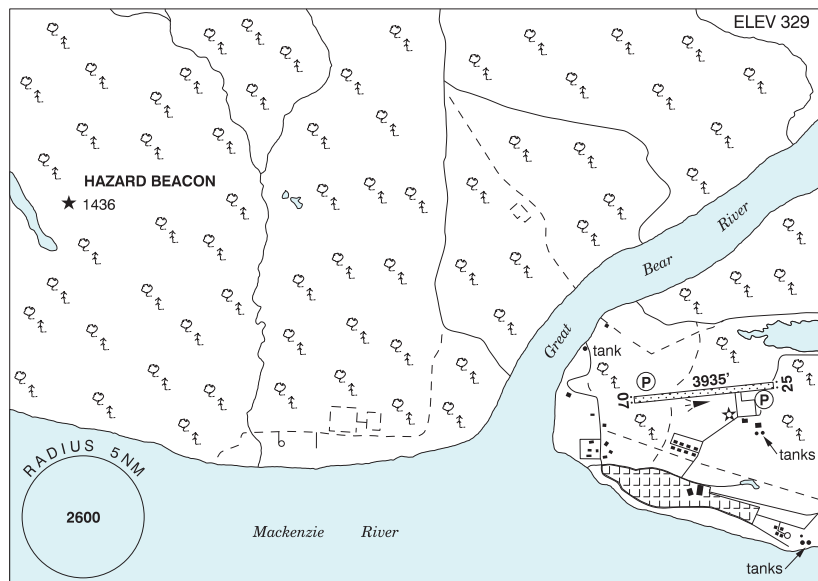
REF	N69 26 00 W133 01 35 22°E (2018) UTC-7(6) Elev 14' A5040 LO5 CAP	
OPR	Govt of Northwest Territories 867-777-2467 Emerg/Incident rpt ctc 877-989-1400 1500-1530Z± Mon-Fri exc hols, O/T 1 hr PN, ctc 867-678-0035/0045/5876 or 867-977-2019/7017. Call out chg may be levied. Cert	
PF	A-1 avbl 14-06Z± dly C-1,2,3,4,5,6	
CUST	AOE/15 888-226-7277 15-23Z± Mon-Fri exc hols	
FLT PLN		
FIG	Edmonton 866-WXBRIEF (Toll free within Canada) or 866-541-4102 (Toll free within Canada & USA)	
ACC	Edmonton IFR 888-358-7526	
CARS	867-977-2469 Ltd hrs (see COMM)	
WX	METAR dur CARS hrs (see COMM) O/T LWIS TAF 16-06Z±, issue times: 16, 19, 01Z (DT 15, 19, 01Z).	
SERVICES		
S	4	
RWY DATA	Rwy 10(105°)/28(285°) 4600x100 GRVL	
RWY CERT	Rwy 10/28 AGN II	
RCR	Opr Win maint avbl 1530-2400Z± Mon-Fri exc hols, O/T 1 hr PN 867-678-0035/0045/5876 867-977-2019/7017. Call out chg may be levied. Rwy compacted snow & gravel mix dur win conds.	
LIGHTING	10-AS(TE ME) P1, 28-AS(TE ME) P1 ARCAL-122.1 type K	
COMM		
MF	aprt rdo ltd hrs O/T tfc 122.1 5NM 3100 ASL (CAR 602.98)	
APRT RDO	TUK aprt rdo 122.1 (V) 14-06Z±	
PRO	Rgt hand circuits Rwy 10 (CAR 602.96).	
CAUTION	4-6' drop offs beyond graded areas at aprx 20' outside rwy edges.	

NORTHWEST TERRITORIES

AERODROME / FACILITY DIRECTORY

TULITA NT

CZFN



REF	N64 54 35 W125 34 10 20°E (2020) UTC-7(6) Elev 329' A5035 LO5 CAP
OPR	Govt of Northwest Territories 867-587-2451 Emerg/Incident rpt 877-989-1400 1530-1700Z± 2345-0100Z± Mon-Fri exc hols, O/T 2 hr PN ctc 867-588-3047. Call out chg may be levied. Cert
PF	A-1 C-2,4,5
FLT PLN	<p>FIC Edmonton 866-WXBRIEF (Toll free within Canada) or 866-541-4102 (Toll free within Canada & USA)</p> <p>ACC Edmonton IFR 888-358-7526</p> <p>CARS 867-588-3191 Ltd hrs (see COMM)</p> <p>WX METAR dur CARS hrs (see COMM) O/T LWIS</p>
RWY DATA	Rwy 07(065°)/25(245°) 3935x99 GRVL
RWY CERT	Rwy 07/25 AGN II
RCR	Opr Win maint 1530-0030Z± Mon-Fri exc hols Oct 1-Apr 30, O/T 2 hrs PN, ctc 867-588-3047. Call out chg may be levied. Rwy compacted snow & grvl mix during win conds.
LIGHTING	07-AS(TE ME) AP, 25-AS(TE ME) AP ARCAL-122.1 type K key mic 7 times for AS. APAPI avbl only dur CARS hrs ops.
COMM	<p>MF aprt rdo ltd hrs O/T tfc 122.1 5NM 3400 ASL (CAR 602.98)</p> <p>APRT RDO 122.1 (V) 16-24Z± Mon-Fri</p>
CAUTION	Ltd MF coverage W and NW of A/D, due terrain. Ngt ops not recommended unless hazard bcn oprg. Extv migratory bird activity Apr-Oct.

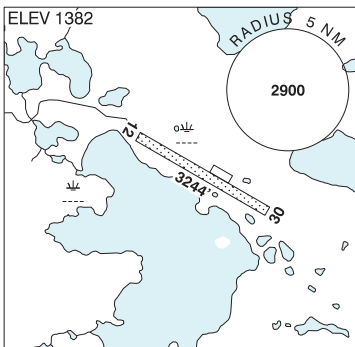
NORTHWEST TERRITORIES

AERODROME / FACILITY DIRECTORY

TUNDRA MINE / SALAMITA MINE NT

CTM7

REF	N64 04 22 W111 09 48 14°E (2018) UTC-7(6) Elev 1382' A5030 A5036
OPR	Indigenous and Northern Affairs Canada 867-445-5232 Reg PPR 24hr ntc rprd
FLT PLN	
FIC	Edmonton 866-WXBRIEF (Toll free within Canada) or 866-541-4102 (Toll free within Canada & USA)
ACC	Edmonton IFR 888-358-7526
RWY DATA	Rwy 12(120°T)/30(300°T) 3244x200 GRVL
RCR	Opr No maint
COMM	
ATF	tfc 123.2 5NM 4400 ASL
PRO	Overfly rwy to check cond prior to ldg.



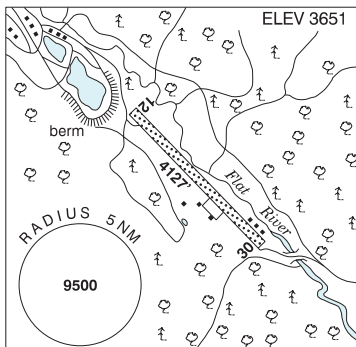
NORTHWEST TERRITORIES

AERODROME / FACILITY DIRECTORY

TUNGSTEN (CANTUNG) NT

CBX5

REF	N61 57 24 W128 12 09 21°E (2015) UTC-8 Elev 3651' A5029
OPR	North American Tungsten Corp 604-638-7440 or 604-759-0913 Ext 222 Reg PPR
FLT PLN	
FIC	Edmonton 866-WXBRIEF (Toll free within Canada) or 866-541-4102 (Toll free within Canada & USA)
ACC	Edmonton IFR 888-358-7526
RWY DATA	Rwy 12(115°)/30(295°) 4127x100 GRVL Rwy 10 is down 0.54%
RCR	Opr/Maintenance Ltd maint
COMM	
ATF	tfc 123.2 5NM 6500 ASL



NORTHWEST TERRITORIES

AERODROME / FACILITY DIRECTORY

ULUKHAKTOK / HOLMAN NT

CYHI

REF	N70 45 46 W117 48 22 2N 18°E (2018) UTC-7(6) Elev 118' A5041 LO5 CAP	
OPR	Govt of Northwest Territories 867-777-2467 Emerg/Incident rpt 877-989-1400 2245-2400Z† Mon, 2345-0100Z† Tue, 1715-1830Z† Thu, 1915-2025Z† Fri, exc hols, O/T 1 hr PN ctc 867-396-3082/4655. Call out chg may be levied. Cert	
PF	A-1 C-2,3,4,5	
FLT PLN		
FIC	Edmonton 866-WXBRIEF (Toll free within Canada) or 866-541-4102 (Toll free within Canada & USA)	
ACC	Edmonton IFR 888-358-7526	
CARS	867-396-3141 Ltd hrs (see COMM).	
WX	METAR dur CARS hrs (see COMM) O/T LWIS TAF 1700-0100Z Mon-Sat, 1700-2000Z Sun, issue times: 17, 19Z (DT 16, 19Z) Mon-Sat, 1700Z† Sun. Exc federal observed hols.	
SERVICES	Call out chg may be levied for svcs	
FUEL	JA Holman Eskimo Co-op 867-396-3531, 587-357-0105	
RWY DATA	Rwy 06(062°T)/24(242°T) 4300x99 GRVL Rwy 24 up 0.63% first 953' then down 0.36%	
RWY CERT	Rwy 06/24 AGN IIIB	
RCR	Opr Win maint 15-24Z† Mon-Fri exc hols, O/T 1 hr PN ctc 867-396-3082/4655. Call out chg may be levied. Rwy compacted snow & grvl mix during win conds.	
LIGHTING	06-AS(TE ME) P1, 24-AS(TE ME) P1 ARCAL-122.1 type K. AS lgt avbl on hi ints only.	
COMM		
RCO	Edmonton rdo 123.475 (FISE) 126.7 (bcst)	
MF	aprt rdo ltd hrs O/T tfc 122.1 5NM 3100 ASL (CAR 602.98)	
APRT RDO	122.1 (V) 15-01Z† Mon-Sat, 15-20Z† Sun, exc federal observed hols	
NAV		
NDB	HI 361 (M) N70 45 44 W117 47 24 Unmonitored when CARS clsd	
PRO	Pilots ctc CARS prior to dep IFR enroute to ensure Holman NDB is oprg normally.	

NORTHWEST TERRITORIES

AERODROME / FACILITY DIRECTORY

WEKWEËTÌ NT

CYWE

REF	N64 11 27 W114 04 36 3.2E 16°E (2018) UTC-7(6) Elev 1208' A5030 A5035 LO5 CAP	
OPR	Govt of Northwest Territories 867-767-9091 Emerg/Incident rpt 867-445-5518 or 877-989-1400 2015-2115Z± Sun-Fri O/T 1 hr PN ctc 867-713-2222. Call out chg may be levied. Cert	
FLT PLN	<p>FIC Edmonton 866-WXBRIEF (Toll free within Canada) or 866-541-4102 (Toll free within Canada & USA)</p> <p>WX METAR AUTO H24 (see COMM) TAF 14-02Z±, issue times: 14, 19Z (DT 13, 19Z) WxCam</p>	
RWY DATA	Rwy 13(127°T)/31(307°T) 2999x75 GRVL Rwy 31 up 1.26% first half	
RWY CERT	Rwy 13/31 AGN II	
RCR	Opr Win maint 1600-2330Z± Sun-Fri O/T 1 hr PN ctc 867-713-2222. Call out chg may be levied. Rwy compacted snow & grvl mix during win conds.	
LIGHTING	13-AS(TE ME) AP, 31-AS(TE ME) AP ARCAL-123.2 type K key mic 7 times for AS APAPI avbl low intensity only	
COMM	<p>ATF tfc 123.2 5NM 4300 ASL</p> <p>AWOS 128.7</p>	
PRO	Rgt hand circuits Rwy 13 (CAR 602.96).	
CAUTION	Caribou may stray onto rwy. Only pilots familiar with lcl terrain should use this aprt at ngt because of higher terrain 1/2 NM NW aprt. Acft on opposite ends of rwy may not be visible to each other.	

NORTHWEST TERRITORIES

AERODROME / FACILITY DIRECTORY

WHATÌ NT

CEM3

REF	N63 07 54 W117 14 46 1E 17°E (2020) UTC-7(6) Elev 882' A5029 LO5 CAP	
OPR	Govt of Northwest Territories 867-767-9091 Emerg/Incident rpt 867-445-5518 or 877-989-1400 2310-0010Z± Sun & Thu, 1740-1840Z± 2310-0010Z± Mon, Tue, Wed & Fri, O/T 1 hr PN ctc 867-494-2222. Call out chg may be levied. Cert	
PF	C-1,2,3,4,5	
FLT PLN	FIC Edmonton 866-WXBRIEF (Toll free within Canada) or 866-541-4102 (Toll free within Canada & USA) ACC Edmonton IFR 888-358-7526	
RWY DATA RWY CERT RCR	Rwy 10(100°)/28(280°) 2991x99 GRVL Rwy 10/28 AGN II Opr Win maint 16-01Z± Sun-Fri, O/T 1 hr PN 867-494-2222. Call out chg may be levied. PLR/PCN Rwy compacted snow & grvl mix during winter conds.	
LIGHTING	10-AS(TE ME) AP, 28-AS(TE ME) AP ARCAL-123.2 type K, key mic 7 times for AS APAPI 10/28 avbl low intensity only.	
COMM	ATF tfc 123.2 5NM 3900 ASL	
CAUTION	Caribou may be on or in vic rwy.	

NORTHWEST TERRITORIES

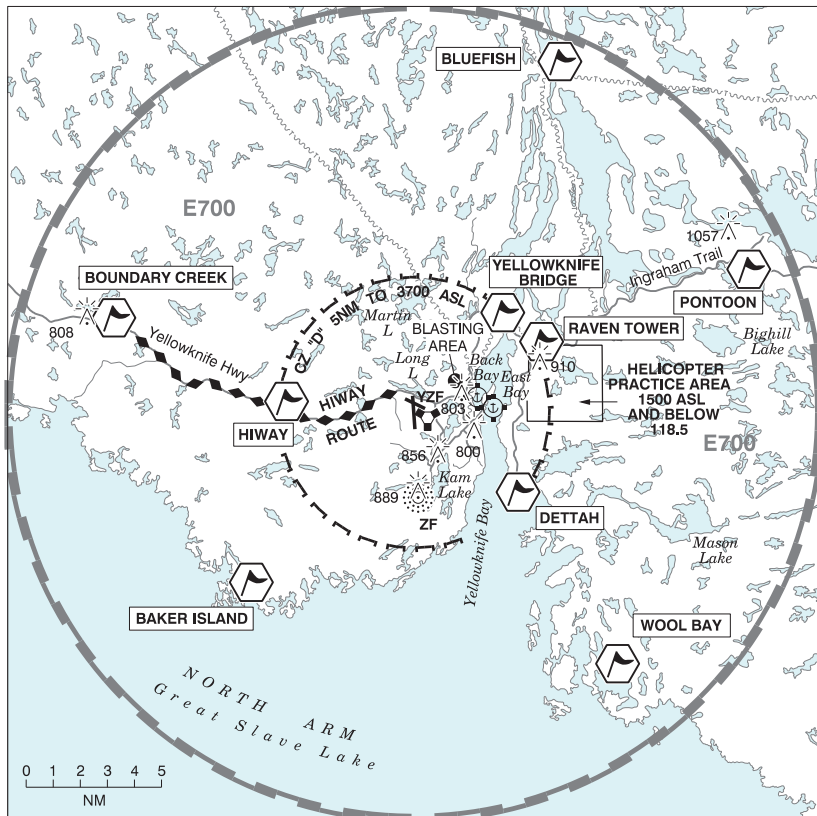
AERODROME / FACILITY DIRECTORY

WRIGLEY NT

CYWY

REF	N63 12 35 W123 26 12 20°E (2018) UTC-7(6) Elev 491' A5029 LO5 HI2 CAP	
OPR	Govt of Northwest Territories 867-695-2471 Emerg/Incident rpt ctc 877-989-1400 Reg	
PF	C-1,2,4,5	
FLT PLN	<p>FIC Edmonton 866-WXBRIEF (Toll free within Canada) or 866-541-4102 (Toll free within Canada & USA)</p> <p>CARS 867-581-3501 ltd hrs (see COMM)</p> <p>WX METAR dur CARS hrs (see COMM) O/T LWIS WxCam</p>	
RWY DATA	Rwy 11(114°)/29(294°) 3500x98 GRVL Rwy 11 up 0.41% Thld 11 displ 495'. RCR Opr Win maint 1600-2330Z† Mon-Fri exc hols, O/T 2 hrs PN, ctc 867-695-2432 or 867-581-3321. Call out chg may be levied. Rwy compacted snow & gravel mix dur win conds.	
LIGHTING	11-AS(TE LO) V1, 29-AS(TE LO) V1 ARCAL-122.1 type J	
COMM	<p>MF aprt rdo ltd hrs O/T tfc 122.1 5NM 3500 ASL (CAR 602.98)</p> <p>APRT RDO 122.1 (V) 15-23Z† Mon-Fri exc federal observed hols</p>	
NAV	DME YWY 113.1 Ch 78 N63 11 08 W123 21 49 (494')	

YELLOWKNIFE VFR TERMINAL PROCEDURES CHART



LOCATION	IDENT	LAT/LONG
BAKER ISLAND	VCBAK	N62°21'00" W114°40'04"
BLUEFISH	VCBLU	N62°40'11" W114°15'30"
BOUNDARY CREEK	VCREK	N62°30'43" W114°51'06"
DETTAH	VCDTA	N62°24'41" W114°18'33"
HIWAY	VCTRE	N62°27'40" W114°37'19"
PONTOON	VCPON	N62°32'30" W114°00'29"
RAVEN TOWER	VCRVN	N62°30'10" W114°16'59"
WOOL BAY	VCWOL	N62°18'00" W114°11'04"
YELLOWKNIFE BRIDGE	VCYEL	N62°31'09" W114°19'10"

NORTHWEST TERRITORIES

AERODROME / FACILITY DIRECTORY

YELLOWKNIFE NT

CYZF

REF	N62 27 47 W114 26 25 16°E (2018) UTC-7(6) Elev 675' A5030 LO5 HI2 CAP	
OPR	Govt of Northwest Territories 867-767-9091 1100-0754Z± O/T 2 hr PN, ctc 867-445-5518. Call out chg may be levied. Cert	
PF	A-1,2,3,6,7 14-06Z± C-3,4,5	
CUST	AOE/15 888-226-7277 16-24Z± Mon-Fri exc hols	
FLT PLN		
FIG	Edmonton 866-WXBRIEF (Toll free within Canada) or 866-541-4102 (Toll free within Canada & USA)	
ACC	Edmonton IFR 888-358-7526	
WX	METAR H24. TAF H24, issue times: 00, 06, 12, 18Z.	
SERVICES	Tran acft prkg ltd. PPR for prkg 867-445-5518.	
FUEL	100LL, JA-1 (FSII avbl), F-34, HPR	
OIL	All	
S	1,2, Mil 4 Ltd, PPR	
ARFF	DESIGNATED CAT 6 1200-0754Z±, O/T call out chg 2 hr PN, O/T aprt clsd to acft 20 seats & abv, exc for diversions or use as an altn A/D without PPR.	
SUP FL	D & A ice ctc Strategic Aviation 867-766-2090 or 867-446-0600	
JASU	CE16, Elect 10/15	
MIL ADV	440 Ops 134.1 867-873-0700 Ext 6440, CSN 766-6440 No trans svcg avbl.	
PVT ADV	Midnight Petroleum (World Fuel Services) 122.9 867-766-4000 1200-2359Z± Mon-Fri O/T call out chg. De'on Cho Logistics (Shell) 128.95 867-669-2180 or 867-446-2224 1200-2359Z± Mon-Fri O/T call out chg.	
MIL CON	Shell Canada Product 867-873-6970	
RWY DATA	Rwy 16(160°)/34(340°) 7503x150 ASPH Rwy 10(100°)/28(280°) 5001x150 ASPH RAG: Rwy 16/34 BAK 12, B (1500') NOTAM issued when cable is up.	
RWY CERT	Rwy 16 RVR 1200(1/4sm) Day only/Rwy 34 RVR 1200(1/4sm) Day only AGN V Rwy 10/28 AGN IIIB	
TWY CERT	Twy: B, C, D, E, F, G, H, J, K AGN IIIB	
TWY	Twys D, E, F, G & K uncontrolled.	
RCR	Opr CRFI & Win maint avbl 1100-0754Z± Oct 15-Apr 15 O/T 2 hrs PN 867-445-5518. Call out chg may be levied. PLR/PCN	
LIGHTING	10-AO(TE ME) P2, 28-AO(TE ME) P2, 16-AS(TE HI) P2, 34-AN(TE HI)	
COMM		
RCO	Edmonton rdo 5680 (FISE) 262.0 (FISE) 123.375 (FISE) 126.7 (bcst)	
ATIS	128.4	
GND	121.9 14-05Z±	
TWR	118.5 340.8 (E) 14-05Z± (emerg only 867-873-3121)	
MF	rdo 118.5 (E) 05-14Z± 5NM 3700 ASL (CAR 602.98) (emerg only 867-873-4049)	
PAL	Edmonton Ctr 135.8	
NAV		
NDB	ZF 356 (M) N62 24 39 W114 26 04	
VORTAC	YZF 115.5 Ch 102 N62 27 52 W114 26 12 (712')	
ILS	IZF 109.5 (Rwy 34) RVR LOC reliable only within 10° either side of centreline.	

NORTHWEST TERRITORIES

AERODROME / FACILITY DIRECTORY

YELLOWKNIFE NT (Cont'd)

CYZF

PRO	REDUCED VISIBILITY OPERATIONS PLAN (RVOP) Rwy 10/28 avbl as twy west of Rwy 16/34. Acft towing requires ATC/FSS clnc. Access Rwy 16/34 only by Twy A, H or G.
CAUTION	Extv migratory bird activity Apr-Oct. Drainage ditches parallel Rwy 16/34 310' W & 260' E centreline respectively, commencing 2000' fr thld Rwy 34 to intxn with Rwy 10/28.